

THINK **CLADDING** THINK

ALSTONE[®]

www.alstoneindia.com

A2 NON-COMBUSTIBLE

FR FIRE RETARDANT

ALSTONE[®]
CLASSIC
METAL COMPOSITE PANEL

THE LEGACY OF
TWO DECADES OF
DELIVERING OVER 600+
MILLION SQ FT OF MCPs,
NOW DELIVERS EVEN MORE.

THINK **CLADDING** THINK

ALSTONE[®]



About Alstone

Alstone is a market leader of Metal Composite Panels (MCP) in India, constantly on the outlook for industry innovation and challenges. Alstone, a two decades old brand is trusted by architects, builders, façade consultants and fabricators. Alstone has the widest range of products in industry to meet unique needs of the market.

Alstone pioneered metal- based HPL, A2 Grade Non-Combustible Panels and metal-based Louvers in India. We have our state-of-the-art production facilities in Dehradun (India) and Dubai (UAE) to cater to Indian and international markets.

We have our in house high tech modern coating line to help us to deliver precise, customized products along with timely delivery under expert supervision.

Alstone has launched Zinc Composite Panels in the Indian market in collaboration with VMZINC France. Along with this, Alstone has recently introduced Alstone Alcomb Panels. Alcomb Panels are made of aluminium honeycomb structure therefore very light in weight and non-combustible (A2 grade) panels. Alstone products are certified and tested by international test lab "Thomas Bell Wright".

Alstone group has diversified into Glass industry as well as in the name of Emerge Glass and Emerge Renewables. Emerge Glass is the industry giant in the manufacturing of Ultra-thin flat glass category and container glass. Emerge Renewables is setting up a specialised solar glass plant in the state of Rajasthan.

20+

YEARS OF TRUST

600+

MILLION SQ FT OF MCP DELIVERED

500+

CHANNEL PARTNERS

16

OFFICES PAN INDIA

10+

COUNTRIES OF EXPORT

THINK **CLADDING** THINK
ALSTONE[®]





We are Committed to safe buildings.

<h1>A2</h1>	<p>NON COMBUSTIBLE</p> <p>Alstone A2 is a superior, fire-safe metal composite panel, rated at the fire safety grade of A2. The environment -friendly panel comprises of a non-combustible core (with 90%+ minerals) for the safety of your buildings.</p>	<h1>FR</h1>	<p>FIRE RETARDANT</p> <p>Alstone FR is composed of a fire-retardant core sandwiched between two skins of aluminium. The core consists of minimum 70% of non-combustible materials.</p>
-------------	--	-------------	---



IMAGINE
ANY COLOUR,
AND WE'LL PRODUCE IT.



State of the art

COIL COATING LINE

- ADVANCE TECHNOLOGY
- ANY SHADE ON DEMAND
- CAN COAT UP TO 0.7 MM THICKNESS
- CAN COAT UP TO 1550 MM WIDTH
- PROMPT DELIVERY FOR PROJECTS

THINK **CLADDING** THINK

ALSTONE[®]

www.alstoneindia.com

CORPORATE **ETHOS**

VISION

ALSTONE aims to be the market leader in cladding industry in India by delivering high quality and innovative products to it's customers.

MISSION

We intend to have a superior understanding of customers' needs and delight them through product innovations along with integrity and honesty towards our business associates.

THE QUALITY APPROACH

At ALSTONE, we have implemented a strong management culture at every step. Right from procurement of raw materials to the manufacturing process, to meeting the stringent customer requirements and timely dispatch, there are multiple quality check points and supervision. ALSTONE's process oriented approach ensures adherence and consistency in our performance.

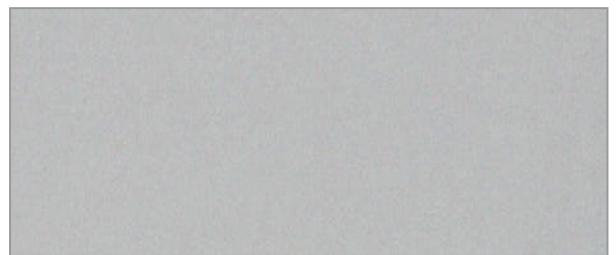


METALLIC & SOLID SERIES



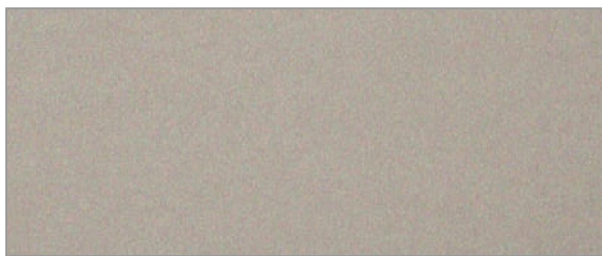
VL-04

Bright Silver



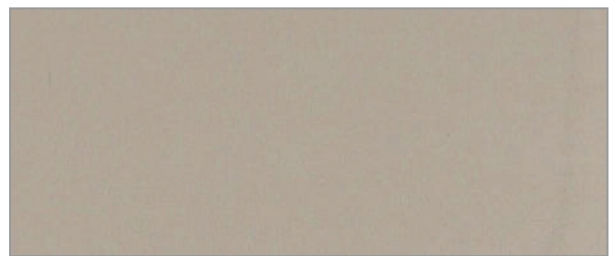
VL-07

Metallic Silver



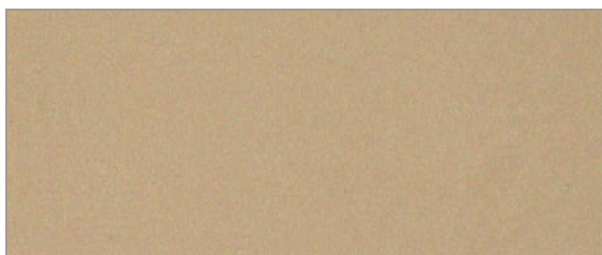
VL-06

Champagne Gold



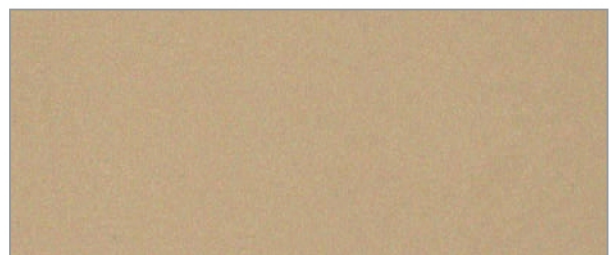
VL-20

Metallic Bronze



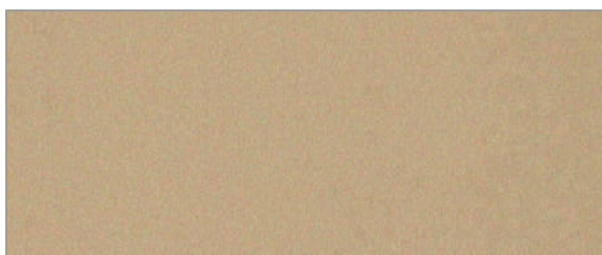
VL-22

Super Gold



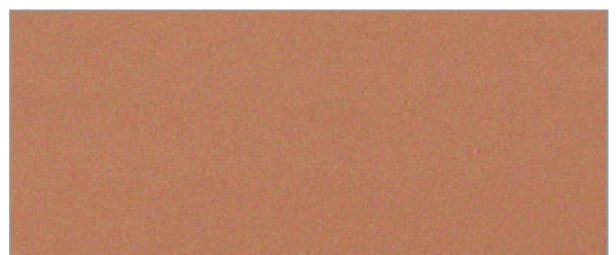
VL-46

Real Gold



VL-24

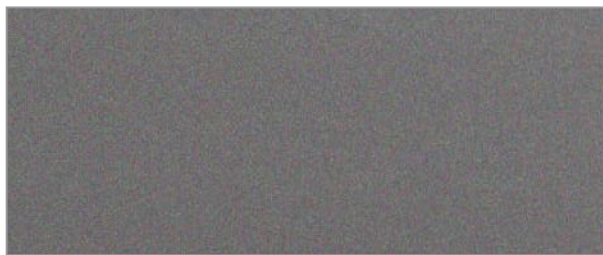
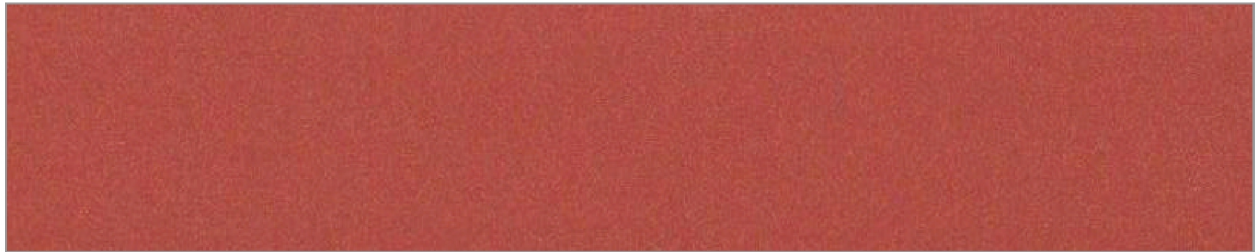
Magic Gold



VL-15

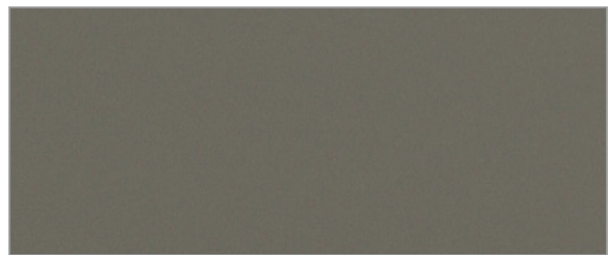
Copper Metallic

METALLIC & SOLID SERIES



VL-14

Black Silver



VL-77

Gun Metallic



VL-31

Coffee Silver



VL-44

Dark Grey



VL-13

Blue Silver



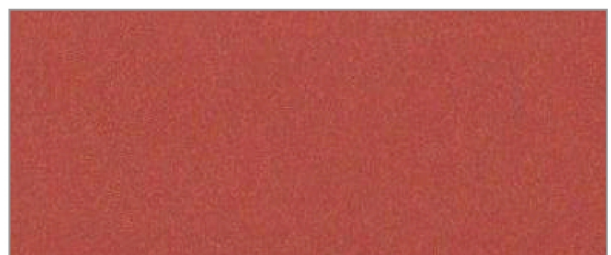
VL-21

Jade Metallic



VL-29

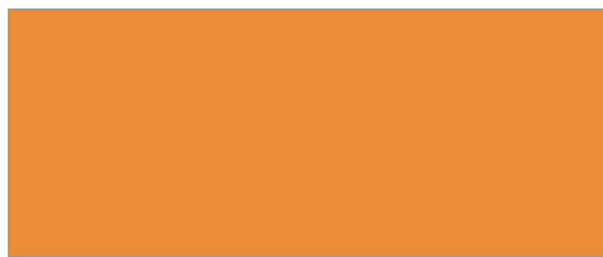
Rose Metallic



VL-27

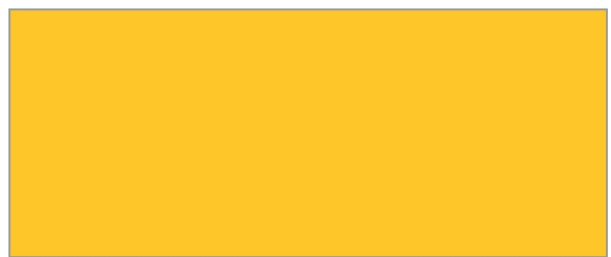
Wine Metallic

METALLIC & SOLID SERIES



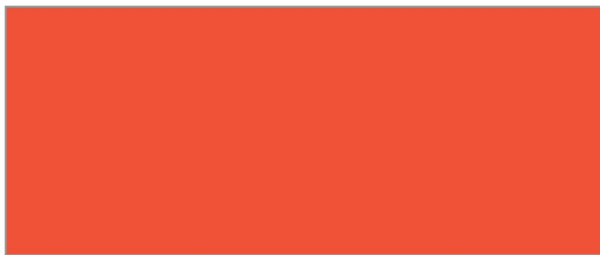
VL-25

Traffic Yellow



VL-02

Yellow



VL-03

Orange



VL-11

Dark Blue



VL-12

Light Blue



VL-45

Sky Blue



VL-23

Ocean Green



VL-28

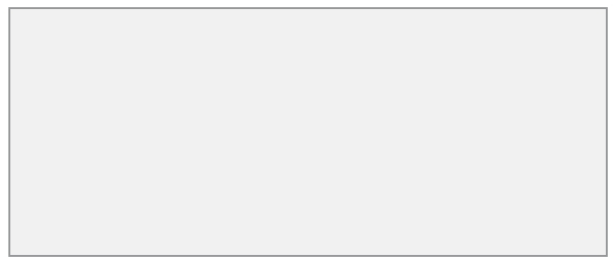
Dabur Green

METALLIC & SOLID SERIES



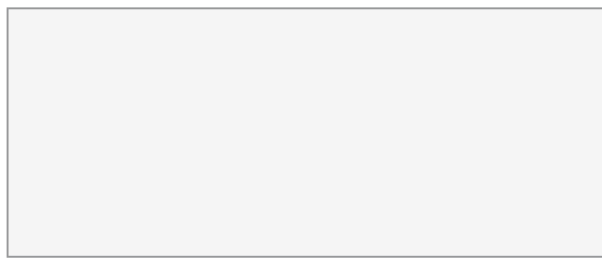
VL-47

Pure White



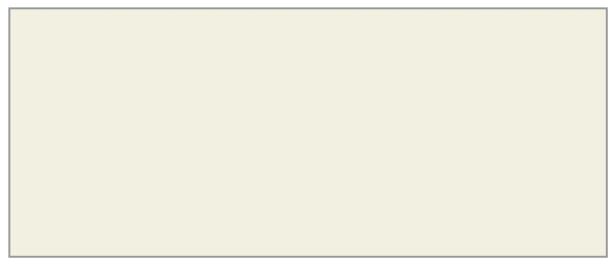
VL-08

Bright White



VL-33

Glossy White



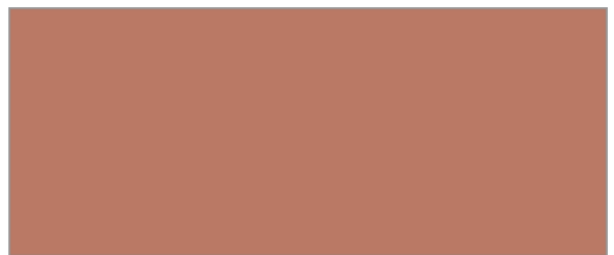
VL-10

Ivory White



VL-60

Dholpur Beige



VL-59

Dholpur Red



VL-62

Glossy Black



VL-19

Coal Black

METALLIC & SOLID SERIES



VL-48

Glossy Red



VL-01

Signal Red



VL-63

Glossy Burgandy



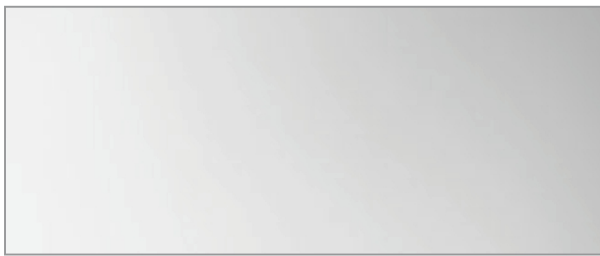
VL-26

Brick Red



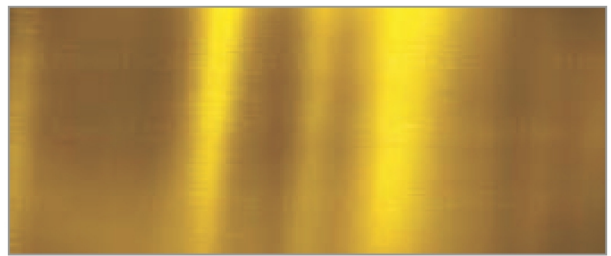
VL-30

Choco Brown



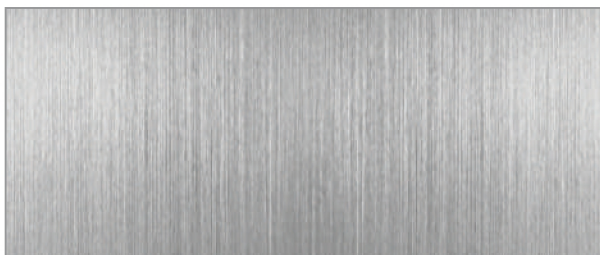
VL-09

Silver Mirror



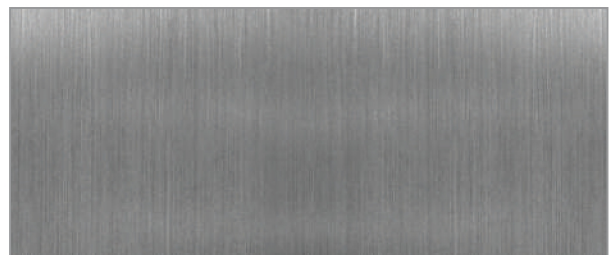
VL-34

Golden Mirror



VL-17

Brush Silver



VL-32

S.S. Finish

THINK **CLADDING** THINK


ALSTONE[®]

www.alstoneindia.com

A2 NON COMBUSTIBLE

OUR **CERTIFICATIONS**







TEST REPORT

Report number:	WTIPL-2023-058	Date of test:	20 th May 2023
Sample Id:	WWT/FE/SID/2023/IP01	Report issued on:	27 th May 2023
ULR No:	TC76872300000058F	Group:	Building Materials
Discipline:	Mechanical Testing	Sub-Group:	Wall, floor, ceiling & cladding panels & shapes.
Ref	WWT/FE/2023/IP01	Total Pages	66

Standard Fire Test as per NFPA 285
For the Project of
**System Development-
Alstone FR-A2 Wall Assembly**





Tested For:
Alstone Manufacturing Private Limited,
Khasra No.1393 Village Chharba,
Langha Road Industrial Area, Sahaspur,
Dehradun (UK)248197.



This report shall not be reproduced wholly or in parts without the written approval of the laboratory.

WINWALL TECHNOLOGY INDIA PRIVATE LTD.
567-A, SR Kandigal Road, Gummidipoondi – 601 201.
Tel: 044 24355940 / 24340422 Fax: 044 24355351
Email: info@winwallindia.com, winwall.in@winwallindia.com
Website: www.winwallinternational.com

TC-7687

7. CLASSIFICATION & FIELD OF APPLICATION

7.1. Reference of classification

This classification has been carried out in accordance with clause 8 of EN 13501-1:2018.

7.2. Classification


The product, 4mm thick Alstone FR A2 Aluminium Composite Panel with Mineral filled Core, in relation to its reaction to fire behavior are classified;



Fire behavior		Smoke Production			Flaming droplets	
A2	-	s	1	,	d	0

Reaction to fire classification: A2 – s1, d0








TEST REPORT

Report number: WTIPL-2023-054	Date of test: 29 th April 2023
Sample Id: WWTFE/SID/IP02/2023	Report issued on: 18 th May 2023
ULR No: TC76872300000054F	Group: Building Materials
Discipline: Mechanical Testing	Sub-Group: Wall, floor, ceiling & cladding panels & shapes.
Ref: WWTFE/2023/IP02	Total Pages: 66

Standard Fire Test as per NFPA 285
For the Project of
**System Development-
Alstone FR-B Wall Assembly**






Tested For:
Alstone Manufacturing Private Limited,
Khasra No.1393 Village Chharba,
Langha Road Industrial Area, Sahaspur,
Dehradun (UK)248197.



This report shall not be reproduced wholly or in parts without the written approval of the laboratory.

WINWALL TECHNOLOGY INDIA PRIVATE LTD.
567-A, SR Kandigal Road, Gummidipoondi - 601 201.
Tel: 044 24355940 / 24340422 Fax: 044 24335351
Email: info@winwallindia.com, winwall.hq@winwallindia.com
Website: www.winwallinternational.com

TC-7857



8. CLASSIFICATION & FIELD OF APPLICATION

8.1. Reference of classification

This classification has been carried out in accordance with Clause 8 of EN 13501-1:2018.

8.2. Classification

The product, 4mm Thick 'Aluminium Composite Panel' in relation to its reaction to fire behavior are classified;

Fire behavior		Smoke production		Flaming droplets
B	-	s	1	d 0

Reaction to fire classification: B – s1, d0



CAN COAT UP TO 0.7MM THICKNESS

MOST ADVANCED COIL COATING LINE

STATE-OF-THE-ART
COIL COATING LINE.

COIL FROM HINDALCO, INDIA

LUMIFLON FEVE/
KYNAR PVDF

TOTALLY CUSTOMISED SHADES

QUALITY & QUANTITY,
FAST DELIVERY

Coil Coating Line & how it gives us an edge.



Uncoiler

Cooling Unit

THINK | CLADDING | THINK

ALSTONE[®]

www.alstoneindia.com

OUR ESTEEMED CLIENTS

 <p>भारतीय रेलवे • INDIAN RAILWAYS</p>	 <p>CPWD</p>	 <p>भारतीय विमानपत्तन प्राधिकरण AIRPORTS AUTHORITY OF INDIA</p>	 <p>दिल्ली मेट्रो रेल कॉर्पोरेशन लिमिटेड Delhi Metro Rail Corporation Limited</p>
 <p>एन बी सी सी NBCC A Navratna CPSE</p>	 <p>एन टी पी सी NTPC</p>	 <p>PWD Govt of Delhi</p>	 <p>LIC भारतीय जीवन बीमा निगम LIFE INSURANCE CORPORATION OF INDIA</p>
 <p>इंडियन ऑयल IndianOil</p>	 <p>Bharat Petroleum energising lives</p>	 <p>हिन्दुस्तान पेट्रोलियम HP</p>	 <p>NAYARA ENERGY</p>
 <p>गैल GAIL</p>	 <p>POWER CORPORATION LIMITED UPPCL</p>	 <p>EIL</p>	 <p>LUCKNOW METRO RAIL CORPORATION</p>
 <p>भारतीय रेलवे पुलिस</p>	 <p>भारतीय पुलिस</p>	 <p>DEFENCE RMO ORGANISATION MINISTRY OF DEFENCE</p>	 <p>PUNJAB POLICE</p>
 <p>Infosys</p>	 <p>DLF BUILDING INDIA</p>	 <p>M3M[™] Our Expertise. Your Joy.</p>	 <p>SBI</p>
 <p>SATTVA TRUST, IT'S WHAT WE BUILD.</p>	 <p>BAGMANE</p>	 <p>Prestige GROUP Add Prestige to your life</p>	 <p>BRIGADE</p>
 <p>Reliance</p>	 <p>PVR</p>	 <p>MARUTI SUZUKI</p>	 <p>Ashok Leyland</p>
 <p>Haldiram's</p>	 <p>KALYAN JEWELLERS</p>	 <p>adani</p>	 <p>K RAHEJA CORP HOMES[™]</p>

KEY TECHNICAL SPECIFICATIONS

S.No.	Specifications	Unit	Standard	B-S1 d0	A2-S1 d0
				4 mm	4 mm
Product Composition					
1	Alloy	EN-485-2	AA 3105 / AA5005	
2	Temper	EN-485-2	H-14/16	
3	Skin thickness	mm	0.5	0.5
4	Core Material	(EN 13501-1)	Fire Retardant mineral filled thermoplastic core.	Non Combustible Core
5	Panel Weight	kg/m ²	7.5	8.2
Product Tolerances					
6	Panel Weight	kg/m ²	±5%	±5%
7	Panel Thickness	mm	± 0.2	± 0.2
8	Skin thickness	mm	± 0.03	± 0.03
9	Panel Width (1250,1500mm)	mm	± 2	± 2
10	Panel Length (Upto 6000mm)	mm	± 4	± 4
11	Bow (Length or width)	%	Max 0.5	Max 0.5
12	Squareness	mm	Max 5	Max 5
Mechanical Charecterstics					
13	Tensile Strength	Mpa	(ASTM E8)	45	43
14	0.2% Proof Stress	Mpa		42	41
15	Elongation	%		≥ 5	≥ 2%
16	Modulus of Elasticity	Mpa		70000	70000
Thermal Charecterstics					
17	Linear Thermal expasion	mm/m/100 °C	(EN 1999 1-1)	2.4	2.4
18	Deflection Temprature	°C	(ASTM D 648)	≥ 110	≥ 116
19	Temprature Resistance	°C	(ASTM C 518)	_50....+80	_50....+80
Acoustical Charecterstics					
20	Sound transmission Loss (Rw)	dB	(ASTM E-90)	27	27
Fire Charecterstics					
21	Reaction to fire	NFPA 285	PASS	PASS
22	Reaction to fire	TBW 0300734	(EN 13501-1)	Class B , S1 d0	Class A2 , S1 d0
23	Reaction to fire		(DIN 4102-1)	Class B , S1 d0	Class A2 , S1 d0
24	Self Ignition temprature not less than 343 °C		(ASTM D1929)	Pass	Pass
25	Fire Retardant	TBW	E119-20	120 MINUTES	180 MINUTES
Surface Finish Charecterstics					
26	Paint finishes	(AAMA 2605-13)	PVDF/FEVE	PVDF/FEVE
27	Gloss @60°C	%		20~35%	20~35%
28	Pencil hardness		HB-F	HB-F
29	Back side service Coating		PE	PE

**Terms & Conditions Apply



OFFICIAL PARTNER



super Batting
super Cladding

THINK | CLADDING | THINK

ALSTONE[®]

www.alstoneindia.com

PRODUCT RANGE

ALSTONE[®]
ZiNC
IN COLLABORATION WITH **VMZINC**

ALSTONE[®]
ALCOMB
Aluminium Honeycomb Panel

ALSTONE[®]
HPL
Feel The Nature

ALSTONE[®] **FR**
FIRE RATED COMPOSITE PANEL

ALSTONE[®]
CLASSIC
METAL COMPOSITE PANEL

ALSTONE[®]
EVOLUTION
METAL COMPOSITE PANEL

**ALSTONE®
LOUVERS**

LIMITLESS AS YOUR IMAGINATION

**ALSTONE®
ANTIq**
BEAUTIFULLY RUSTIC

*ALSTONE®
Stonera*
WORK of ART

**ALSTONE®
FUEL PRO**

**ALSTONE®
SIGN PRO**

ALSTAR®
ALUMINIUM COMPOSITE PANEL

A PRODUCT OF **ALSTONE®**

20
YEARS
MOST
TRUSTED
BRAND

THINK | CLADDING | THINK
ALSTONE[®]



INDIA

15th Floor, Vijaya Building, 17, Barakhamba Road, Connaught Place, New Delhi- 110001
Manufacturing: 1393, Langha Road, Industrial Area, Dehradun- 248142, Uttarakhand, India.



Scan for more information

DUBAI (UAE)

Sharjah Industrial Area-13, Near Alico, Sharjah, UAE.
Manufacturing: R288, Al Ghail Industrial Area, Ras Al Khaimah, UAE.
Contact :+971 54793 6042

www.alstoneindia.com | info@alstoneindia.com | Whatsapp: 9599040030

f in / **alstonepanels**