

THINK **CLADDING** THINK

**ALSTONE**<sup>®</sup>

[www.alstoneindia.com](http://www.alstoneindia.com)

**A2** NON-COMBUSTIBLE

**FR** FIRE RETARDANT

**ALSTONE**<sup>®</sup>  
**CLASSIC**  
METAL COMPOSITE PANEL

THE LEGACY OF  
TWO DECADES OF  
DELIVERING OVER 600+  
MILLION SQ FT OF MCPs,  
**NOW DELIVERS EVEN MORE.**

---

THINK **CLADDING** THINK

**ALSTONE**<sup>®</sup>



# About **Alstone**

Alstone is a market leader of Metal Composite Panels (MCP) in India, constantly on the outlook for industry innovation and challenges. Alstone, a two decades old brand is trusted by architects, builders, façade consultants and fabricators. Alstone has the widest range of products in industry to meet unique needs of the market.

Alstone pioneered metal- based HPL, A2 Grade Non-Combustible Panels and metal-based Louvers in India. We have our state-of-the-art production facilities in Dehradun (India) and Dubai (UAE) to cater to Indian and international markets.

We have our in house high tech modern coating line to help us to deliver precise, customized products along with timely delivery under expert supervision.

Alstone has launched Zinc Composite Panels in the Indian market in collaboration with VMZINC France. Along with this, Alstone has recently introduced Alstone Alcomb Panels. Alcomb Panels are made of aluminium honeycomb structure therefore very light in weight and non-combustible (A2 grade) panels. Alstone products are certified and tested by international test lab "Thomas Bell Wright".

Alstone group has diversified into Glass industry as well as in the name of Emerge Glass and Emerge Renewables. Emerge Glass is the industry giant in the manufacturing of Ultra-thin flat glass category and container glass. Emerge Renewables is setting up a specialised solar glass plant in the state of Rajasthan.

**20+**

YEARS OF TRUST

**600+**

MILLION SQ FT OF MCP DELIVERED

**500+**

CHANNEL PARTNERS

**16**

OFFICES PAN INDIA

**10+**

COUNTRIES OF EXPORT

THINK **CLADDING** THINK

**ALSTONE**<sup>®</sup>





## We are Committed to safe buildings.

<h1>A2</h1>	<p><b>NON COMBUSTIBLE</b></p> <p>Alstone A2 is a superior, fire-safe metal composite panel, rated at the fire safety grade of A2. The environment -friendly panel comprises of a non-combustible core (with 90%+ minerals) for the safety of your buildings.</p>	<h1>FR</h1>	<p><b>FIRE RETARDANT</b></p> <p>Alstone FR is composed of a fire-retardant core sandwiched between two skins of aluminium. The core consists of minimum 70% of non-combustible materials.</p>
-------------	--	-------------	---



IMAGINE  
ANY COLOUR,  
AND WE'LL PRODUCE IT.



State of the art

## **COIL COATING LINE**

- ADVANCE TECHNOLOGY
- ANY SHADE ON DEMAND
- CAN COAT UP TO 0.7 MM THICKNESS
- CAN COAT UP TO 1550 MM WIDTH
- PROMPT DELIVERY FOR PROJECTS

THINK | **CLADDING** | THINK

**ALSTONE**<sup>®</sup>

[www.alstoneindia.com](http://www.alstoneindia.com)

## CORPORATE **ETHOS**

### **VISION**

ALSTONE aims to be the market leader in cladding industry in India by delivering high quality and innovative products to it's customers.

### **MISSION**

We intend to have a superior understanding of customers' needs and delight them through product innovations along with integrity and honesty towards our business associates.

### **THE QUALITY APPROACH**

At ALSTONE, we have implemented a strong management culture at every step. Right from procurement of raw materials to the manufacturing process, to meeting the stringent customer requirements and timely dispatch, there are multiple quality check points and supervision. ALSTONE's process oriented approach ensures adherence and consistency in our performance.



**METALLIC & SOLID SERIES**



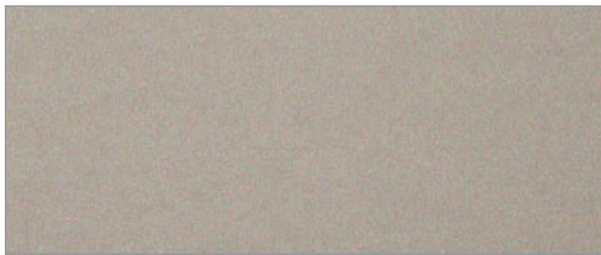
VL-04

Bright Silver



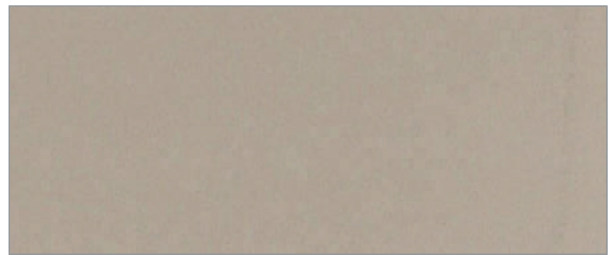
VL-07

Metallic Silver



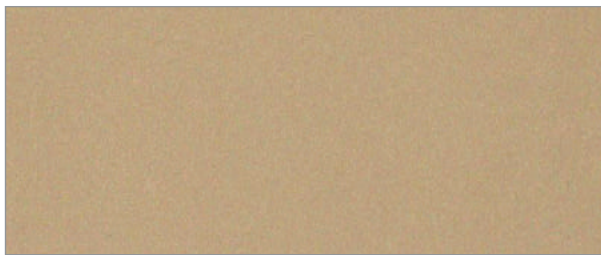
VL-06

Champagne Gold



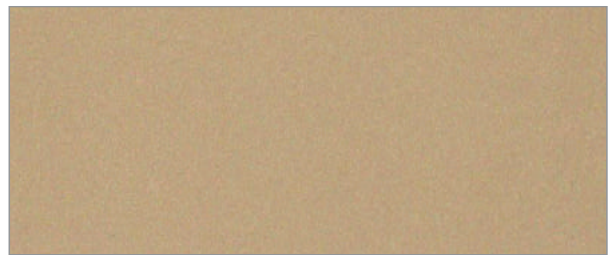
VL-20

Metallic Bronze



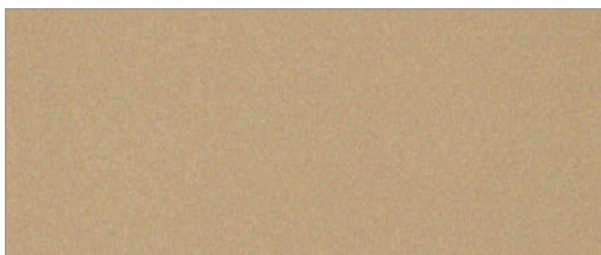
VL-22

Super Gold



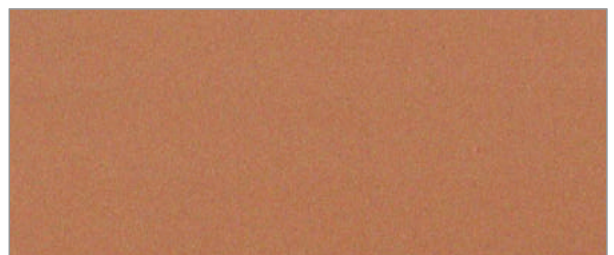
VL-46

Real Gold



VL-24

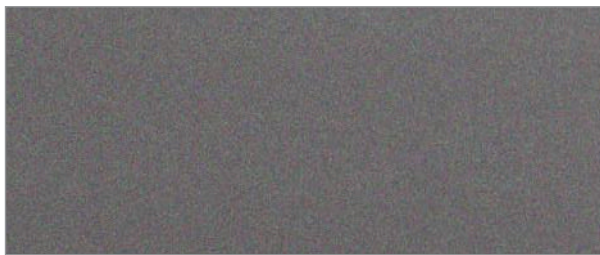
Magic Gold



VL-15

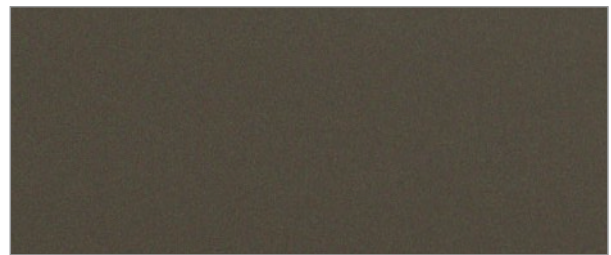
Copper Metallic

**METALLIC & SOLID SERIES**



VL-14

Black Silver



VL-77

Gun Metallic



VL-31

Coffee Silver



VL-44

Dark Grey



VL-13

Blue Silver



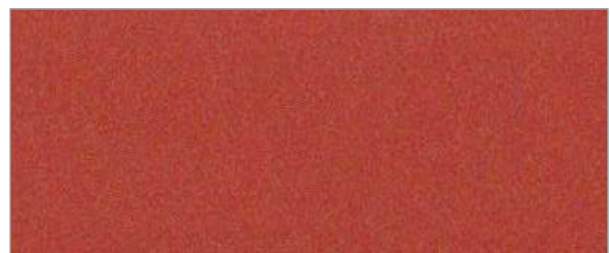
VL-21

Jade Metallic



VL-29

Rose Metallic



VL-27

Wine Metallic

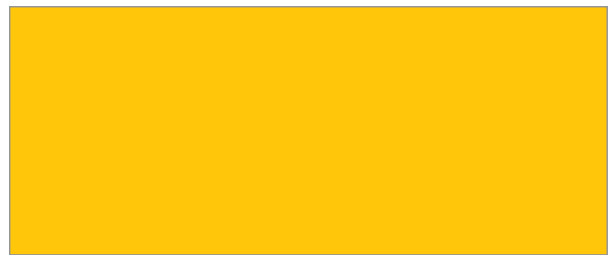


**METALLIC & SOLID SERIES**



VL-25

Traffic Yellow



VL-02

Yellow



VL-03

Orange



VL-11

Dark Blue



VL-12

Light Blue



VL-45

Sky Blue



VL-23

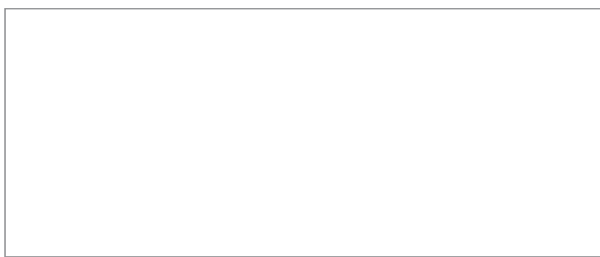
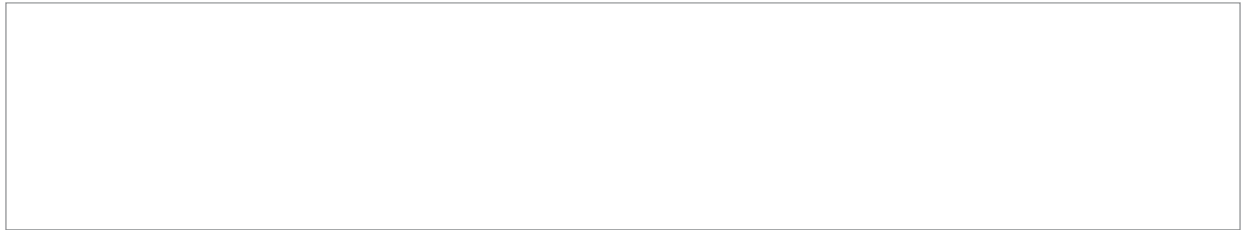
Ocean Green



VL-28

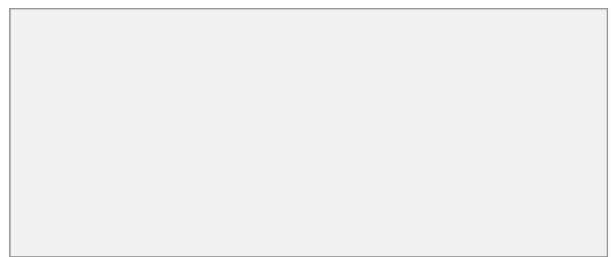
Dabur Green

**METALLIC & SOLID SERIES**



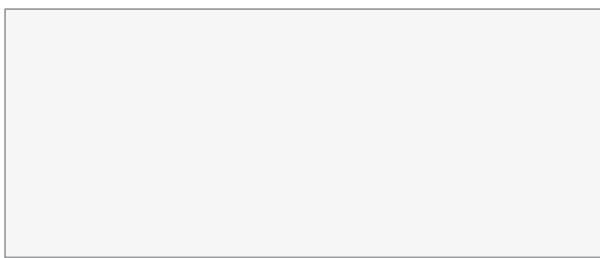
VL-47

Pure White



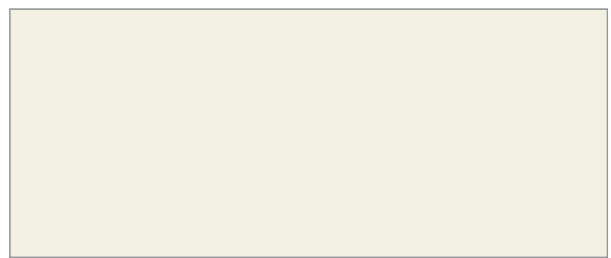
VL-08

Bright White



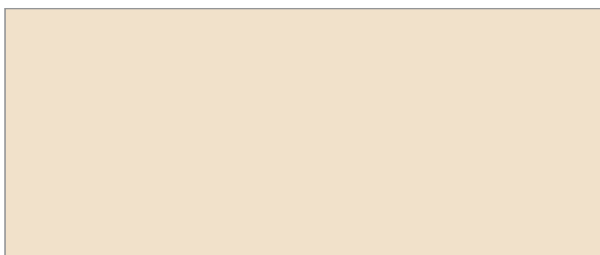
VL-33

Glossy White



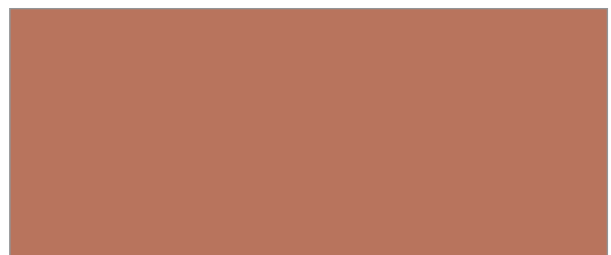
VL-10

Ivory White



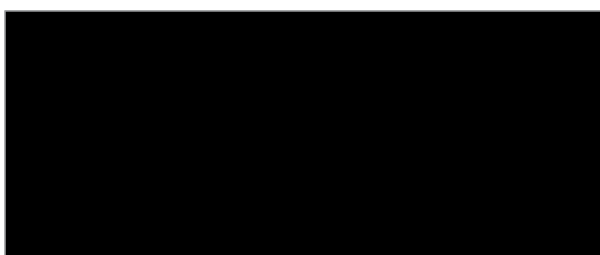
VL-60

Dholpur Beige



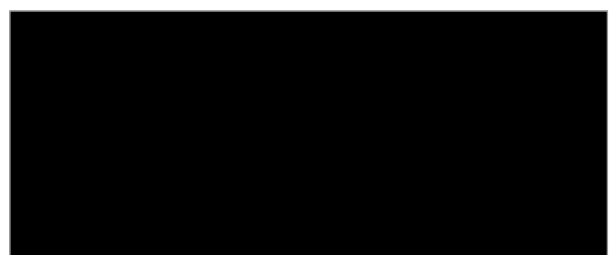
VL-59

Dholpur Red



VL-62

Glossy Black



VL-19

Coal Black

**METALLIC & SOLID SERIES**



VL-48

Glossy Red



VL-01

Signal Red



VL-63

Glossy Burgandy



VL-26

Brick Red



VL-30

Choco Brown



VL-09

Silver Mirror



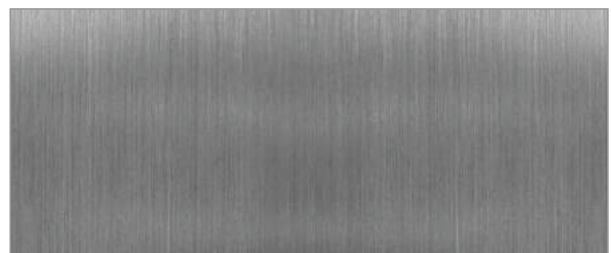
VL-34

Golden Mirror



VL-17

Brush Silver



VL-32

S.S. Finish

THINK **CLADDING** THINK


**ALSTONE**<sup>®</sup>

www.alstoneindia.com

**A2** NON COMBUSTIBLE

OUR **CERTIFICATIONS**







**TEST REPORT**

Report number:	WTPL-2023-058	Date of test:	20 <sup>th</sup> May 2023
Sample Id:	WWTFE/SID/2023/IP01	Report issued on:	27 <sup>th</sup> May 2023
ULR No:	TC76872300000058F	Group:	Building Materials
Discipline:	Mechanical Testing	Sub-Group:	Wall, floor, ceiling & cladding panels & shapes.
Ref:	WWTFE/2023/IP01	Total Pages:	66

Standard Fire Test as per NFPA 285  
For the Project of  
**System Development-  
Alstone FR-A2 Wall Assembly**





Tested For:  
**Alstone Manufacturing Private Limited,**  
Khasra No.1393 Village Chharba,  
Langha Road Industrial Area, Sahaspur,  
Dehradun (UK)248197.



This report shall not be reproduced wholly or in parts without the written approval of the laboratory.

**WINWALL TECHNOLOGY INDIA PRIVATE LTD.**  
567-A, SR Kundigai Road, Gummidipoondi – 601 201.  
Tel: 044 24335940 / 24340422 Fax: 044 24335351  
Email: info@winwallindia.com winwall.ind@winwallindia.com  
Website: www.winwallinternational.com

TC-7687

**7. CLASSIFICATION & FIELD OF APPLICATION**

**7.1. Reference of classification**

This classification has been carried out in accordance with clause 8 of EN 13501-1:2018.

**7.2. Classification**


The product, 4mm thick Alstone FR A2 Aluminium Composite Panel with Mineral filled Core, in relation to its reaction to fire behavior are classified;



Fire behavior	Smoke Production			Flaming droplets		
	s	1	2	d	0	
A2	-	s	1	.	d	0

**Reaction to fire classification: A2 – s1, d0**







**TEST REPORT**

Report number: WWT/FE/2023/054	Date of test: 29 <sup>th</sup> April 2023
Sample Id: WWT/FE/2023/054	Report issued on: 18 <sup>th</sup> May 2023
ULR No: TC768723000000054F	Group: Building Materials
Discipline: Mechanical Testing	Sub-Group: Wall, floor, ceiling & cladding panels & shapes.
Ref: WWT/FE/2023/054	Total Pages: 66



Standard Fire Test as per NFPA 285  
For the Project of  
**System Development-  
Alstone FR-B Wall Assembly**

Tested For:  
**Alstone Manufacturing Private Limited,**  
Khasra No.1383 Village Chharba,  
Langha Road Industrial Area, Sahaspur,  
Dehradun (UK)248197.

This report shall not be reproduced wholly or in parts without the written approval of the laboratory.

**WINWALL TECHNOLOGY INDIA PRIVATE LTD.**  
567-A, SR Kandigal Road, Gurneidipoondi – 601 201.  
Tel: 044 24355940 / 24340422 Fax: 044 24339351  
Email: [info@winwallindia.com](mailto:info@winwallindia.com), [winwall\\_bho@winwallindia.com](mailto:winwall_bho@winwallindia.com)  
Website: [www.winwallinternational.com](http://www.winwallinternational.com)



**8. CLASSIFICATION & FIELD OF APPLICATION**

**8.1. Reference of classification**

This classification has been carried out in accordance with Clause 8 of EN 13501-1:2018.

**8.2. Classification**

The product, 4mm Thick 'Aluminium Composite Panel' in relation to its reaction to fire behavior are classified;

Fire behavior	Smoke production	Flaming droplets
B	s 1	d 0

**Reaction to fire classification: B – s1, d0**



CAN COAT UP TO 0.7MM THICKNESS

MOST ADVANCED COIL COATING LINE

STATE-OF-THE-ART  
**COIL COATING LINE.**

COIL FROM HINDALCO, INDIA

LUMIFLON FEVE/ KYNAR PVDF

TOTALLY CUSTOMISED SHADES

QUALITY & QUANTITY, FAST DELIVERY

**Coil Coating Line & how it gives us an edge.**



Uncoiler

Cooling Unit

			 <p>दिल्ली मेट्रो रेल कॉर्पोरेशन लिमिटेड Delhi Metro Rail Corporation Limited</p>
 <p>एन बी सी सी NBCC A Navratna CPSE</p>			
 <p>इंडियनऑयल IndianOil</p>			
 <p>गैल GAIL</p>	 <p>POWER CORPORATION LIMITED UPPCL</p>		 <p>LUCKNOW METRO RAIL CORPORATION</p>
			 <p>PUNJAB POLICE</p>
			

## KEY TECHNICAL SPECIFICATIONS

S.No.	Specifications	Unit	Standard	B-S1 d0	A2-S1 d0
				4 mm	4 mm
<b>Product Composition</b>					
1	Alloy	.....	EN-485-2	AA 3105 / AA5005	
2	Temper	.....	EN-485-2	H-14/16	
3	Skin thickness	mm	.....	0.5	0.5
4	Core Material	.....	(EN 13501-1)	Fire Retardant mineral filled thermoplastic core.	Non Combustible Core
5	Panel Weight	kg/m <sup>2</sup>	.....	7.5	8.2
<b>Product Tolerances</b>					
6	Panel Weight	kg/m <sup>2</sup>	.....	±5%	±5%
7	Panel Thickness	mm	.....	± 0.2	± 0.2
8	Skin thickness	mm	.....	± 0.03	± 0.03
9	Panel Width (1250,1500mm)	mm	.....	± 2	± 2
10	Panel Length ( Upto 6000mm)	mm	.....	± 4	± 4
11	Bow (Length or width)	%	.....	Max 0.5	Max 0.5
12	Squareness	mm	.....	Max 5	Max 5
<b>Mechanical Charecterstics</b>					
13	Tensile Strength	Mpa	(ASTM E8)	45	43
14	0.2% Proof Stress	Mpa		42	41
15	Elongation	%		≥ 5	≥ 2%
16	Modulus of Elasticity	Mpa		70000	70000
<b>Thermal Charecterstics</b>					
17	Linear Thermal expansion	mm/m/100 °C	(EN 1999 1-1)	2.4	2.4
18	Deflection Temprature	°C	(ASTM D 648)	≥ 110	≥ 116
19	Temprature Resistance	°C	( ASTM C 518)	_50....+80	_50....+80
<b>Acoustical Charecterstics</b>					
20	Sound transmission Loss (Rw)	dB	(ASTM E-90)	27	27
<b>Fire Charecterstics</b>					
21	Reaction to fire	NFPA 285	.....	PASS	PASS
22	Reaction to fire	TBW 0300734	(EN 13501-1)	Class B , S1 d0	Class A2 , S1 d0
23	Reaction to fire		(DIN 4102-1)	Class B , S1 d0	Class A2 , S1 d0
24	Self Ignition temprature not less than 343 °C		(ASTM D1929)	Pass	Pass
25	Fire Retardant	TBW	E119-20	120 MINUTES	180 MINUTES
<b>Surface Finish Charecterstics</b>					
26	Paint finishes	.....	(AAMA 2605-13)	PVDF/FEVE	PVDF/FEVE
27	Gloss @60°C	%		20~35%	20~35%
28	Pencil hardness	.....		HB-F	HB-F
29	Back side service Coating	.....		PE	PE

\*\*Terms & Conditions Apply





OFFICIAL PARTNER



**super Batting**  
**super Cladding**

THINK | CLADDING | THINK

**ALSTONE®**

[www.alstoneindia.com](http://www.alstoneindia.com)

**PRODUCT RANGE**

**ALSTONE®**  
**ZiNC**  
IN COLLABORATION WITH **VMZINC**

**ALSTONE®**  
**ALCOMB**  
Aluminium Honeycomb Panel

**ALSTONE®**  
**HPL**  
Feel The Nature

**ALSTONE®** **FR**  
FIRE RATED COMPOSITE PANEL

**ALSTONE®**  
**CLASSIC**  
METAL COMPOSITE PANEL

**ALSTONE®**  
**EVOLUTION**  
METAL COMPOSITE PANEL

**ALSTONE®  
LOUVERS**  
LIMITLESS AS YOUR IMAGINATION

**ALSTONE®  
ANTIq**  
BEAUTIFULLY RUSTIC

*Stonera* **ALSTONE®**  
WORK of ART

**ALSTONE®  
FUEL PRO**

**ALSTONE®  
SIGN PRO**

**ALSTAR®**  
ALUMINIUM COMPOSITE PANEL

A PRODUCT OF **ALSTONE®**

**20**  
YEARS  
MOST  
TRUSTED  
BRAND

THINK **CLADDING** THINK  
**ALSTONE**<sup>®</sup>



---

**INDIA**

15th Floor, Vijaya Building, 17, Barakhamba Road, Connaught Place, New Delhi- 110001  
**Manufacturing:** 1393, Langha Road, Industrial Area, Dehradun- 248142, Uttarakhand, India.



Scan for more information

---

**DUBAI (UAE)**

Sharjah Industrial Area-13, Near Alico, Sharjah, UAE.  
**Manufacturing:** R288, Al Ghail Industrial Area, Ras Al Khaimah, UAE.  
**Contact :+971 54793 6042**

---

**www.alstoneindia.com | info@alstoneindia.com | Whatsapp: 9599040030**

**f in**     / **alstonepanels**